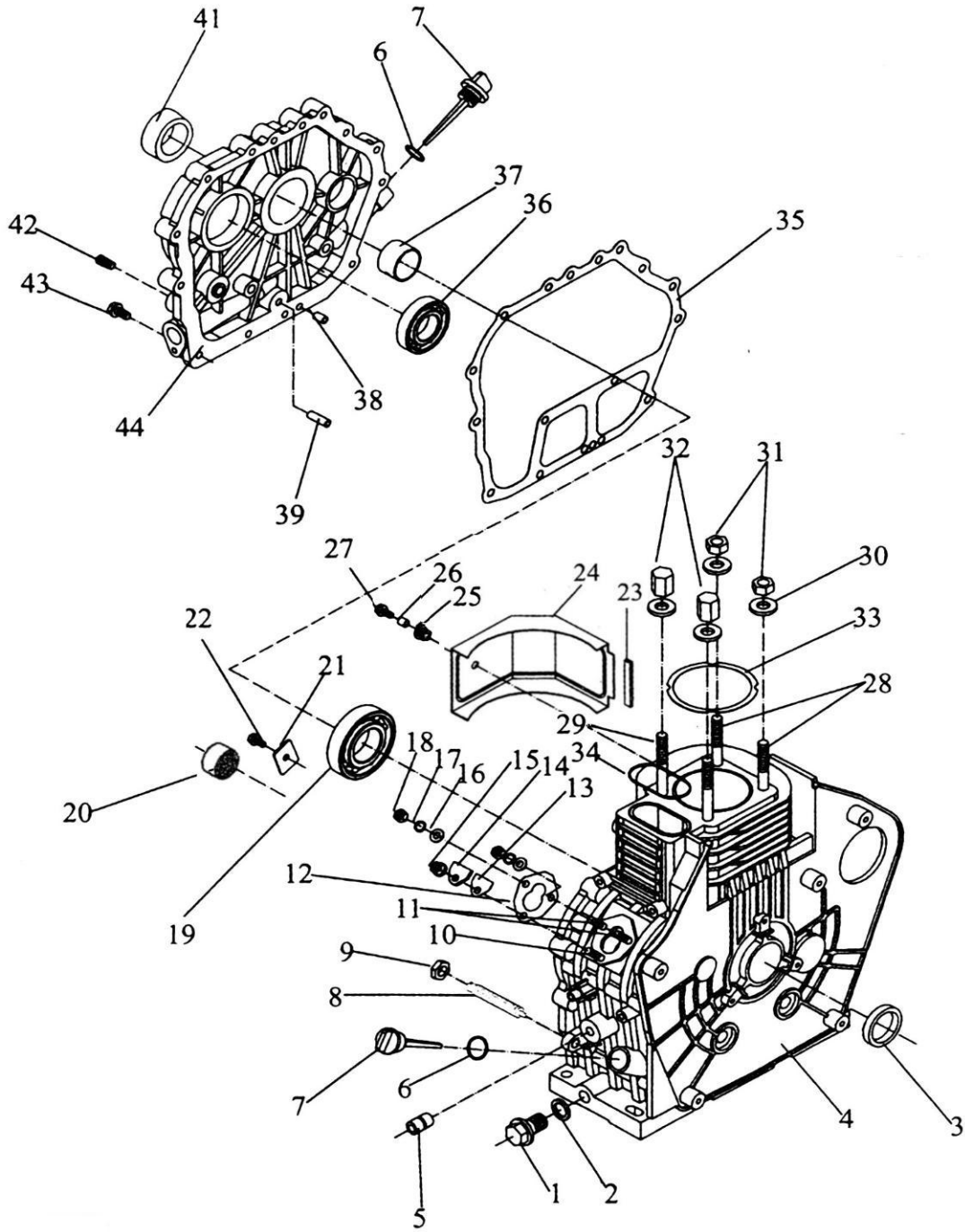





# WM186FB/WM186FBE 爆炸图

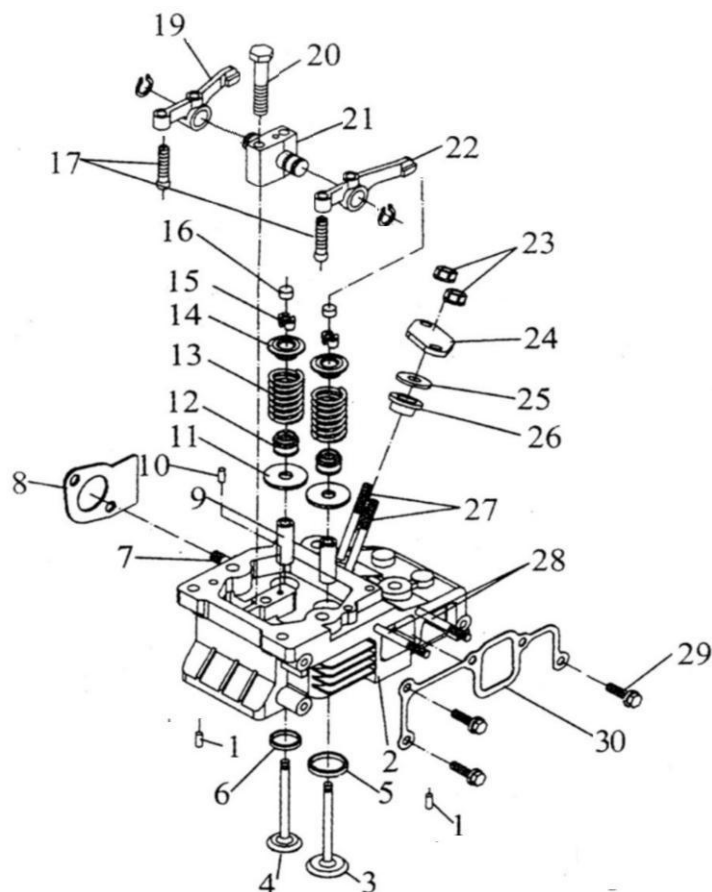
## 01、曲轴箱体总成



<p>186FS</p>  <p>1</p>	<p>186FGET</p>  <p>1-1</p>	<p>178FG</p>  <p>42-1</p>
---	---	---

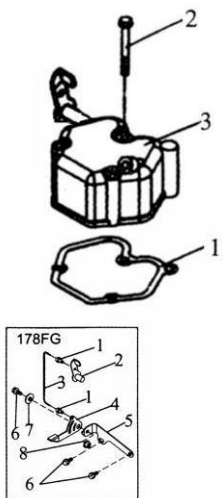
序号	物料代码	名称	Description	数量	备注
1	12.020.002.0001	机体放油螺塞	Drain Plug	1	
1-1	11.005.039.7001	放油螺栓连接管	Oil Drain Bolt Connection Tube		
2	11.005.035.7001	放油螺栓垫片	Oil Plug Seal Assy	1	
3	12.016.002.0850	油封/φ 35*φ 50*8	Oil Seal Sg35*50*8	1	
4	11.005.022.7301	曲轴箱体	Cylinder Block.	1	手起动
	11.005.022.7302	曲轴箱体	Cylinder Block.	1	电启动
5	12.009.002.0400	滚针轴承/HK081410	Needle Bearing/Hk081410	2	
6	12.008.001.0400	O 型密封圈/φ 24*2.4	O-Ring 24*2.4	2	
7	11.005.009.7201	机油尺	Oil Filler Gap	2	
8/9	11.012.022.7201	油量控制器部件	Fuel Controller	1	
10	12.004.004.0040	双头螺柱/AM6*30	Stud AM6*30	1	
11	12.004.004.0050	双头螺柱/AM6*40	Stud AM6*40	2	
12	11.009.009.7200	喷油泵调整垫片	Fuel Injection Pump Gasket	按需	
13	11.009.011.7201	喷油泵视窗盖垫片	Seal Gasket	1	
14	11.009.010.7201	喷油泵视窗盖板	Seal Plate	1	
15	12.001.005.0023	六角法兰面螺母/M6	Nut M6	3	
16	12.006.014.0090	平垫圈 GB/T97/φ 6	Washer 6	2	
17	12.006.008.0022	弹簧垫圈 GB/T93/φ 6	Spring Washer 6	2	
19	12.009.001.0300	深沟球轴承 6308/P5	Ball Bearing 6308/P5	1	
20	12.009.002.0500	滚针轴承 HK1512	Needle Bearing HM1512	1	
21	11.005.023.7201	曲轴止推片	Retainer	1	
22	12.002.013.0481	GB/T5789/M8*16	Bolt M8*16	1	
23	11.010.014.7001	引风板减震条	Cushion Blocking	1	
24	11.010.013.7301	引风板	Govemor	1	
25	11.010.015.7001	引风板减震套	Vibration Isolation Cushion Block	1	
26	11.010.016.7201	引风板减震垫衬套	Shrath	1	
27	12.002.013.0171	GB/T5789/M6*20	Bolt M6*20	1	
28	11.003.020.0301	汽缸盖双头螺栓/M10*105	Cylinder Head Stud / M10*105	2	
29	11.003.020.0201	汽缸盖双头螺栓/M10*118	Cylinder Head Stud / M10*118	2	
30	11.003.021.0101	汽缸盖螺母垫片	Washer	4	
31	11.003.019.0003	汽缸盖螺母/薄	Cylinder Head Nut(Short)	2	
32	11.003.019.0004	汽缸盖螺母/厚	Cylinder Head Nut ( Long)	2	
33	11.003.010.7300	气缸盖垫片	Cylinder Head Shim	1	
34	11.003.008.7303	矩形密封圈	Cylinder Head Ring	1	
35	11.005.019.7301	曲轴箱盖垫片	Crank Case Gasket	1	
36	12.009.001.0210	深沟球轴承/6207/P5	Ball Bearing 6206/P5	1	
37	11.005.031.7301	主轴瓦	Main Bearing	1	
38	12.019.001.0100	销轴/GB/T882/φ 8*12	Pin 8*12	2	
39	11.011.007.7201	进油导管	Oil Indicator	1	
41	12.016.002.0851	油封/φ 35*φ 50*10	Oil Seal SG35*50*10	1	
42	12.015.012.0001	内六角螺堵	Plug	1	
42-1	11.011.006.7001	机油压力传感器部件	Oil Pressure Sensor	1	
43	12.002.013.0520	GB/T5789/M8*33.5	Bolt M8 * 33.5	16	
44	11.005.018.7301	曲轴箱盖	Crank Case Cover	1	
1	11.005.038.7301	曲轴堵头	Crankshaft Plug	1	凸轮轴输出

## 02、气缸盖总成



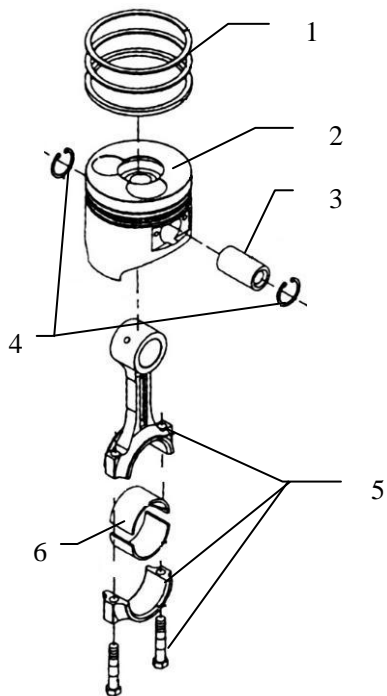
序号	物料代码	名称	Description	数量	备注
1	12.019.001.0020	销轴/ $\phi$ 4*8	Pin 4*8	1	
2/5/6/9	11.003.009.7301	气缸盖部件	Cylinder Head	1	
3	11.004.002.7301	进气门	Intake Valve	1	
4	11.004.004.7301	排气门	Exhaust Valve	1	
7	12.004.003.0030	双头螺柱 GB/T899/M8*32	Stud AM8*32	2	
8	11.002.004.7301	排气口垫	Silencer Gasket	1	
10	12.019.001.0020	销轴 GB/T882/ $\phi$ 4*8	Pin 4*8	1	
11	11.004.010.7301	气门弹簧垫圈	Valve Spring Washer	2	
12	11.004.001.7301	挡油罩	Valve Conduit Oil Seal	2	
13	11.004.009.7301	气门弹簧	Spring Retainer	2	
14	11.004.012.7301	气门弹簧座	Rock Arm Assy	2	
15	11.004.014.7301	气门锁夹	Cotter	4	
16	11.004.013.7301	气门调节垫块	Valve Adjusting Plate	2	
17	11.004.023.7301	摇臂支座部件	Arm Assy	1	
20	12.002.013.0581	六角法兰面螺栓/M8*45	Bolt M8*45	2	
23	12.001.005.0023	六角法兰面螺母/M6	Nut M6	2	
24	11.009.014.7001	喷油器压板	Injector Clamp	1	
25	11.009.013.7250	喷油器调整垫片	Spacer Washer	按需	
26	11.003.003.7301	隔热套	Insulation Sleeve	1	
27	12.004.004.0070	双头螺柱/AM6*67	Stud AM6*67	2	
28	12.004.004.0090	双头螺柱/AM6*95	Stud AM6*95	2	
29	12.002.013.0191	六角法兰面螺栓/M6*25	Bolt M6*25	3	
30	11.001.007.7301	进气管垫	Air Intake Gasket	1	

### 03、气缸盖罩总成



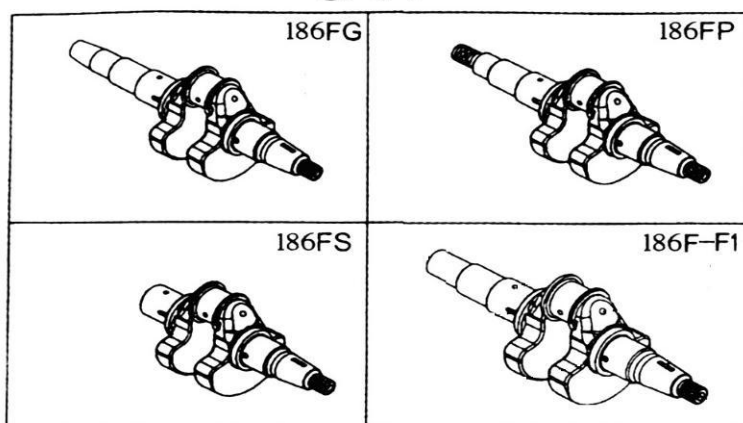
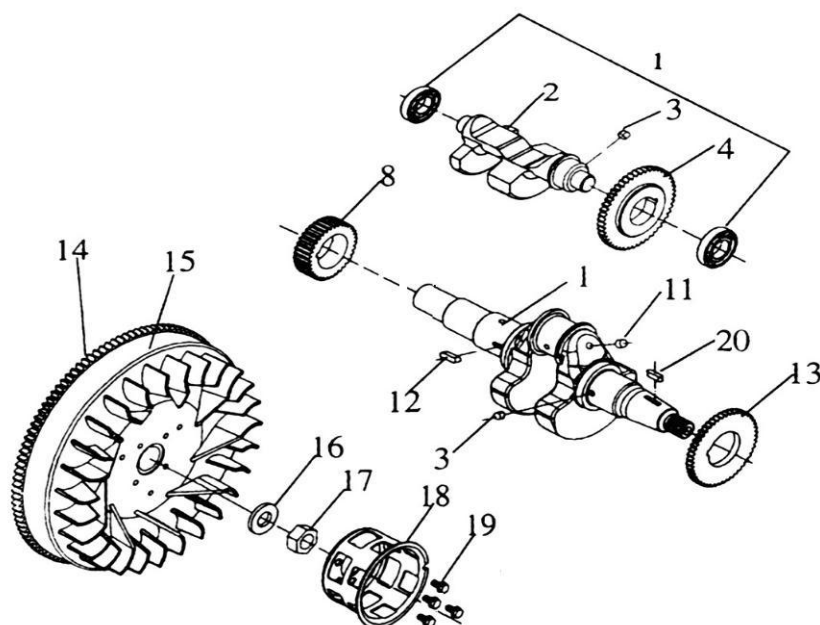
序号	物料代码	名称	Description	数量	备注
1	11.003.012.7301	气缸盖罩垫片	Bonner Gasket	1	
2	12.002.013.0330	六角法兰面螺栓 M6*70	Bolt /M6*70	3	
3	11.003.011.7302	气缸盖罩部件	Bonnet Assy	1	
机组动力(Unit Power)					
3	11.003.006.7301	减压拉杆	Decompression Wire Sheath	1	
5	11.003.007.7001	减压外手柄部件	Decompression External Handle Parts	1	
6	12.002.013.0151	六角法兰面螺栓 M6×14	Bolt /M6*14	2	

### 04、活塞连杆总成



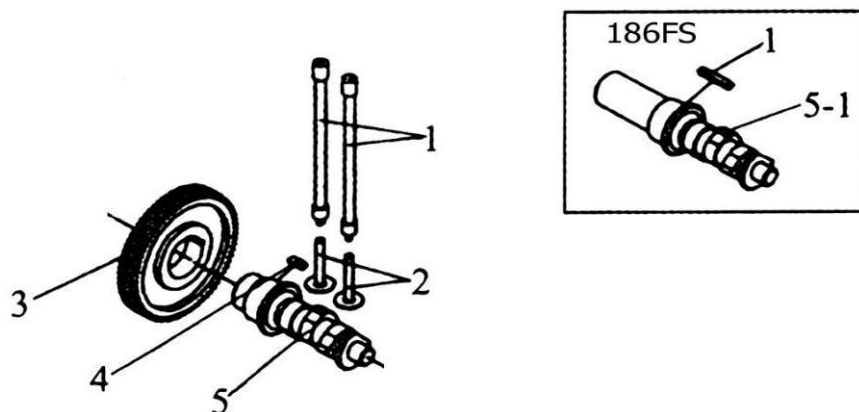
序号	物料代码	名称	Description	数量	备注
1	11.006.004.7101	活塞环组合	Ring Set	1	
2	11.006.003.7301	活塞	Piston	1	
3	11.006.005.7301	活塞销	Piston Pin	1	
4	11.006.006.0351	活塞销挡圈 $\phi$ 23	Washer 23	2	
5	11.006.007.7301	连杆部件	Connecting Rod Assy	1	
6	11.006.008.7302	连杆轴瓦	Crank Pin Bearing	2	

## 05、曲轴飞轮总成



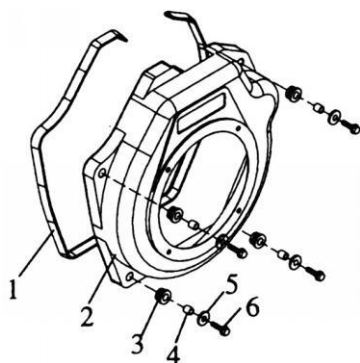
序号	物料代码	名称	Description	数量	备注
1	12.009.001.0150	深沟球轴承/6203/P5	Ball Bearing 6203/P5	2	
2	11.004.007.7301	平衡轴	Balancer Shaft	1	
3	12.014.002.0190	平键/5*5*7	Key 5×7	2	
4	11.006.012.7301	平衡轴正时齿轮	Timing Gear Of Balance Shaft	1	
8	11.006.015.7301	曲轴正时齿轮	Crankshaft Timing Gear	1	
10	11.006.013.7308	曲轴(W 轴)	Crank Shaft	1	
	11.006.013.7302	曲轴(G3 轴)	Crank Shaft	1	
	11.006.013.7301	曲轴(F1 轴)	Crank Shaft	1	
	11.006.013.7304	曲轴(F-B 轴)	Crank Shaft	1	
11	12.010.001.0020	钢球 S ϕ 6.35=1/4'	Steel Ball	1	
12	12.014.002.0120	平键/5*5*12	Key 5×12	1	
13	11.006.011.7301	平衡轴传动齿轮	Drive Gear Of Balance Shsft	1	
14	11.007.004.7301	飞轮齿圈	Flywheel Ring Geat	2	
15	11.008.007.7302	飞轮	Fly Wheel	1	
16	12.015.027.0010	飞轮螺母垫片	Fly Wheel Nut Washer	1	
17	12.001.005.0100	飞轮螺母/M18*1.5	Fly Wheel Nut/ M18*1.5	1	
18	11.007.006.7301	启动杯	Starter Pulley	1	
19	12.002.013.0143	六角法兰面螺栓/M6*12	Bolt M6*12	4	
20	12.014.002.0130	平键/5*5*14	Key 5×14	1	

## 06、凸轮轴总成



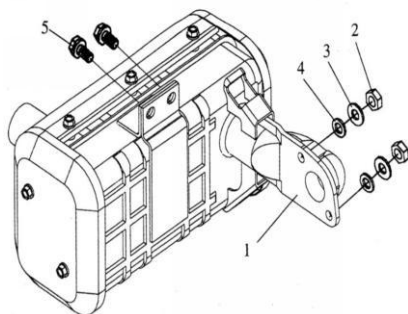
序号	物料代码	名称	Description	数量	备注
1	11.004.021.7302	推杆	Valve Rod Assy	2	
2	11.004.015.7301	气门挺柱	Valve Tappet	2	
3	11.004.018.7301	凸轮轴正时齿轮	Camshaft Timing Gear	1	
4	12.014.002.0130	平键/5*5*14	Key 5*14	1	
5	11.004.020.7304	凸轮轴	Camshaft	1	
5-1	11.004.020.7305	凸轮轴	Camshaft	1	凸轮输出用

## 07、导风罩总成



序号	物料代码	名称	Description	数量	备注
1	11.010.010.7101	减震垫条	Shock Absorber Seat	1	
2	11.010.003.7351	导风罩组件	Fan Case Welded Assy	1	
3	11.010.011.7001	减震套	Shock Absorber	4	
4	11.010.004.7201	导风罩衬套	Collar10*10	4	
5	12.006.012.0020	大垫圈/φ6*φ18*1.6	Washer 6	4	
6	12.002.013.0191	六角法兰面螺栓/M6*25	Bolt M6*25	4	

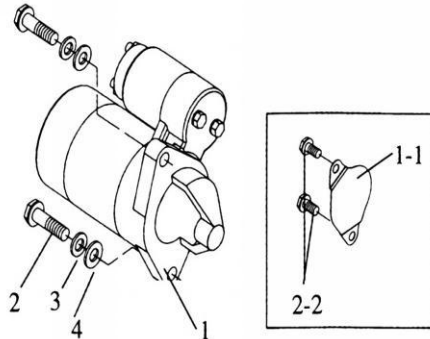
## 08、消声器总成



序号	物料代码	名称	Description	数量	备注
----	------	----	-------------	----	----

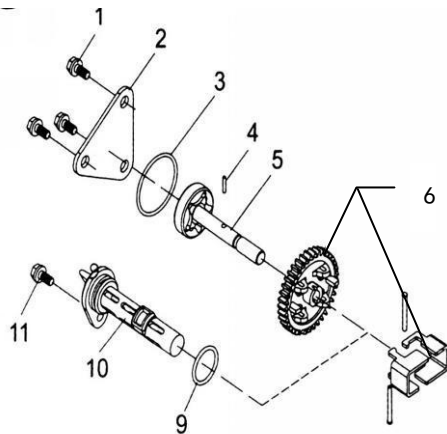
1	11.002.011.7301	消声器总成	Silencer Assy	1	
2	12.001.001.0024	1 型六角螺母/M8	Nut 8	2	
3	12.006.008.0032	弹簧垫圈/ $\phi$ 8	Spring Washer 6	2	
4	12.006.014.0180	平垫圈/ $\phi$ 8	Washer 8	2	
5	12.002.013.0481	六角法兰面螺栓/M8*16	Bolt M8*16	2	

## 09、起动电机总成



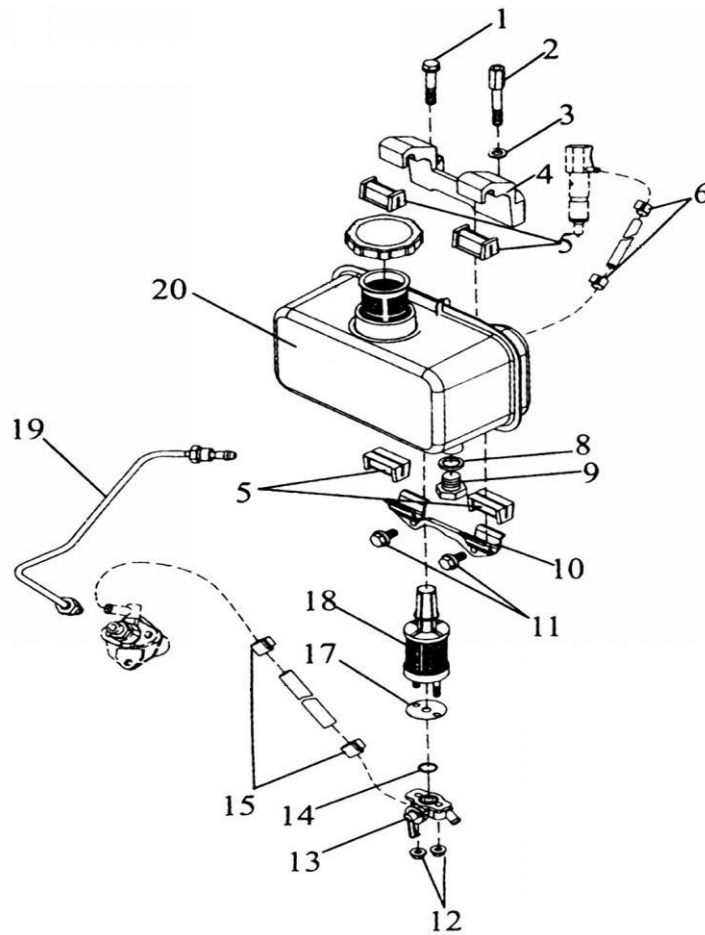
序号	物料代码	名称	Description	数量	备注
1	11.007.013.7201	起动电机总成	Fly Wheel Alternator	1	
1-1	11.005.016.7201	启动电机孔盖板	Starter Seat Cover	1	
2	12.002.009.0440	六角头螺栓/M10*35	Bolt M10*35	2	
2-2	12.002.009.0396	六角头螺栓/M10*20	Bolt M10*20	2	
3	12.006.008.0041	弹簧垫圈/ $\phi$ 10	Spring Washer 6	2	
4	12.006.014.0200	平垫圈/ $\phi$ 10	Washer 10	2	

## 10、润滑系统



序号	物料代码	名称	Description	数量	备注
1	12.002.013.0143	六角法兰面螺栓/M6*12	Bolt M6*12	3	
2	11.011.002.7201	机油泵盖板	Oil Pump Cover	1	
3	12.008.001.0430	O 型密封圈/ $\phi$ 34.5*1.8	O-Ring 34.8*1.8	1	
4	12.019.001.0010	销轴/ $\phi$ 3*16	Pin 3*16	1	
5	11.011.001.7301	机油泵部件	Oil Pump Assy	1	
6	11.012.009.7201	调速从动齿轮组合	Oil Pump Gear	1	
9	12.008.001.0400	O 型密封圈/ $\phi$ 24*2.4	O-Ring 24*2.4	1	
10	11.011.004.7201	机油滤清器部件	Oil Filter Assy	1	
11	12.002.013.0151	六角法兰面螺栓/M6*14	Bolt M6*14	1	

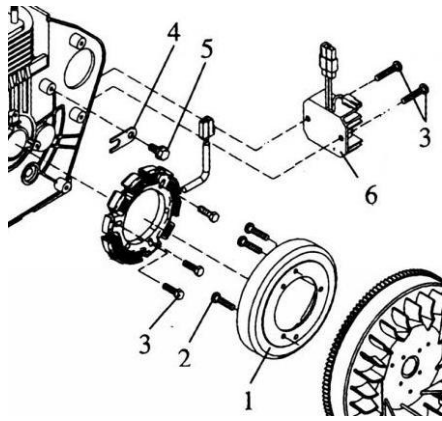
## 11、燃油系统



序号	物料代码	名称	Description	数量	备注
1	12.002.013.0581	六角法兰面螺栓/M8*45	Bolt M8×45	1	
2	11.009.037.0001	油箱上支架紧固螺栓	Upper Stay Bolt	1	
3	12.006.014.0180	平垫圈/φ8	Washer 8	1	
4	11.009.032.7301	油箱上支架	Upper Stay	1	
5	11.009.029.7201	油箱减震垫	Fuel Tank Damper	4	
6	11.009.007.7301	回油管组件	Fuel Return Pipe Assy	1	
8	12.015.027.0011	油箱放油螺栓垫片	Fuel Tank Plug Seat	1	
9	12.020.001.0001	油箱放油螺塞	Fuel Tank Plug	1	
10	11.009.033.7201	油箱下支架	Lower Stay Assy	1	
11	12.002.013.0151	六角法兰面螺栓/M6*14	Bolt M6*14	2	
12	12.001.005.0023	六角法兰面螺母/M6	Nut 6	2	
13	11.009.031.7201	油箱开关组件	Fuel Tank Gock Assy	1	
14	12.008.001.0220	O型密封圈/φ13.2*1.8	O-Ring 13.2*1.8	1	
15	11.009.021.0001	输油管组件	Fuel Pipe Assy	1	
17	11.009.002.7201	柴油滤芯垫片	Fuel Filter Gasket	1	
18	11.009.003.7301	柴油滤芯组件	Fuel Filter Assy	1	
19	11.009.004.7301	高压油管部件	Fuel Injection Pipe Assy	1	
20	11.009.034.7361	油箱组件	Fuel Tank Assy	1	
21	11.009.034.9006	油箱盖部件	Fuel Tank Gap Assy	1	

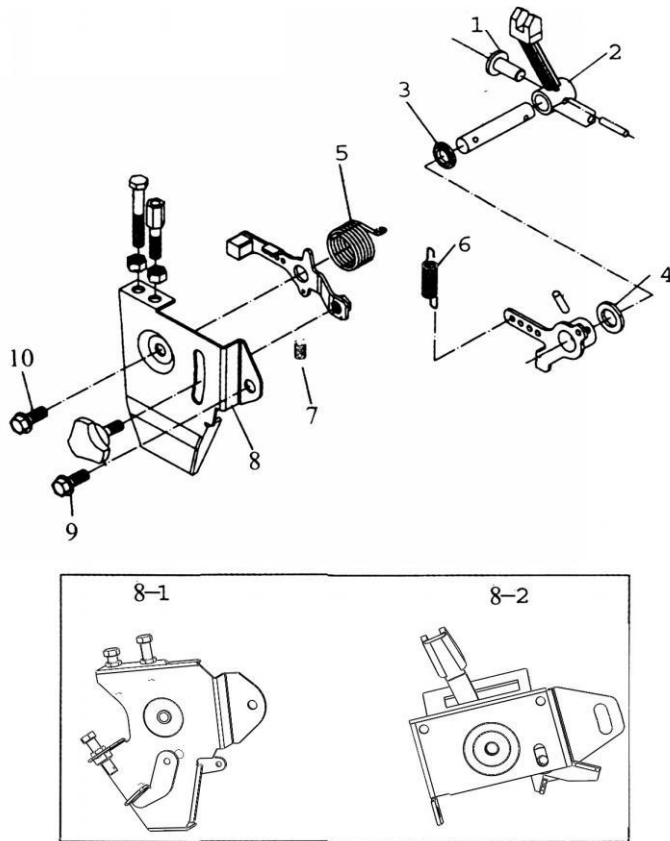
## 12、飞轮发电机总成





序号	物料代码	名称	Description	数量	备注
1	11.008.008.7201	飞轮发电机组件	Fly Wheel Alternator	1	
2	12.003.010.0020	十字槽沉头螺钉/M6*8	Screw Bolt M6*8	3	
3	12.002.013.0171	六角法兰面螺栓/M6*20	Bolt M6*20	5	
4	11.008.012.0001	压线板	Wire Clamp	1	
5	12.002.013.0143	六角法兰面螺栓/M6*12	Bolt M6*12	1	
6	11.008.006.7201	调压器组件	Regulator	1	

### 13、调速及操纵组合

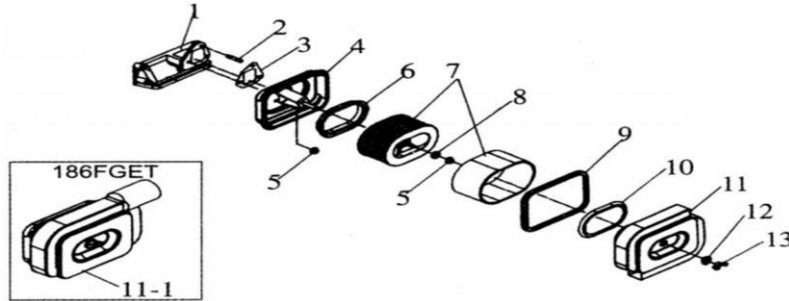


序号	物料代码	名称	Description	数量	备注
1	11.012.012.7301	调速器推盘 24.5	Tappet 25.5	1	
2	11.012.001.7301	拨叉杠杆部件	Lever Fork	1	
3	12.016.002.0050	油封 $\phi 8 * \phi 14 * 4$	Oil Seal $8 \times 14 \times 4$	1	
4	11.012.025.7001	杠杆拨叉轴调整垫片	Lever Washer	2	
5	11.012.016.7201	复位弹簧	Return Spring	1	
6	11.012.010.7302	调速弹簧	Governor Spring	1	
7	11.012.020.7201	微调弹簧	Fine Spring	1	

8	11.012.006.7202	调速操纵部件（单控面板）	Control Lever Assy.	1	
8-1	11.012.006.7204	调速操纵部件（微耕机用）	Control Lever Assy.	1	
8-2	11.012.006.7203	调速操纵部件（机组用）	Control Lever Assy.	1	
9	12.002.013.0143	六角法兰面螺栓 M6*12	Nut M6×12	1	
10	12.002.013.0191	六角法兰面螺栓 M6*25	Nut M6×25	1	

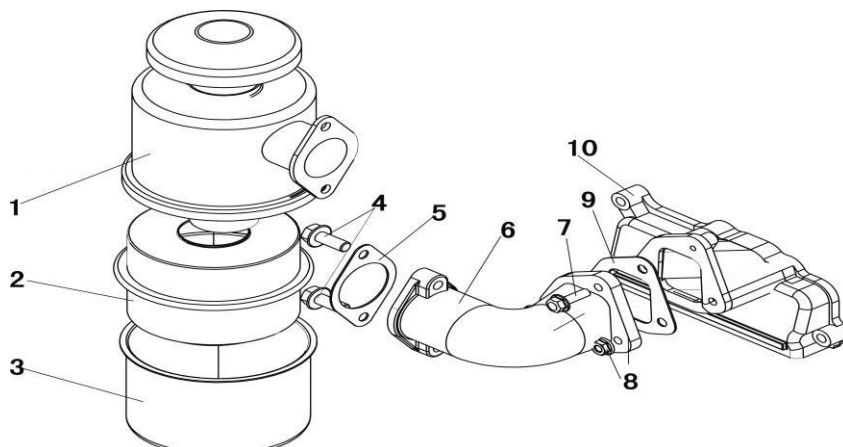
## 14、进气系统

纯动力：



序号	物料代码	名称	Description	数量	备注
1	11.001.006.7301	进气管	Intake Pipe	1	
2	12.002.013.0143	六角法兰面螺栓/M6×12	Nut M6×12	1	
3	11.001.007.7301	空滤器垫片	Air Cleaner Gasket	1	
5	12.001.005.0023	六角法兰面螺母 M6	Flange Nut M6	2	
4	11.001.016.7301 静音型： 11.001.016.7302	空气滤清器底壳部件	Air Cleaner Case Assy	1	
6		防震密封圈 II	Shock Absorber Washer 2	1	
7		空气滤清器芯部件	Air Cleaner Element Assy	1	
8		防震件	Element Shock Absorber	1	
9		防震密封圈 I	Shock Absorber Washer 1	1	
10		密封圈	Case Ring	1	
11		空滤器盖板	Cover Assy	1	
12		防震密封组件	Case Shock Absorber	1	
13		蝶形螺母 M6	Nut M6	1	

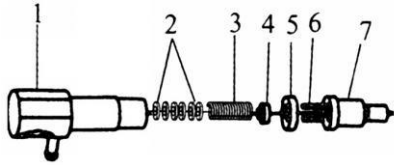
微耕机动力：



序号	物料代码	名称	Description	数量	备注
1	11.001.016.7303	空气滤清器外壳部件	Air Filter Connecting Disc	1	
2		滤芯组件	Air Filter Case	1	
3		空滤滤清器油盘	Air Flter Sump	1	
4	12.002.013.0481	六角法兰面螺栓/M8*16	Nut M8×16	2	
5	11.001.012.7301	空滤器垫	Air Cleaner Gasket	1	

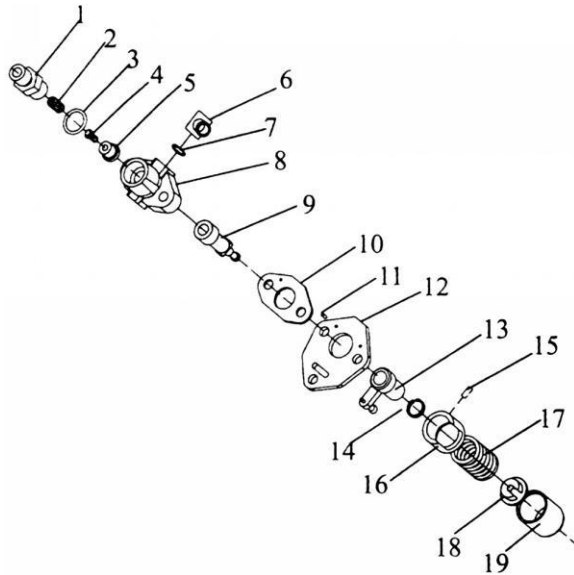
6	11.001.010.7301	进气弯管	Intake Pipe Bending	1	
7	12.002.013.0191	六角法兰面螺栓/M6*25	Nut M6×25	1	
8	12.001.005.0023	六角法兰面螺母/M6	Nut M6	2	
9	11.001.011.7301	进气弯管垫片	Intake Pipe Bending Gasket	1	
10	11.001.006.7301	进气管	Intake Pipe	1	

### 15、喷油器部件（11.009.012.7301）



序号	物料代码	名称	Description	数量	备注
1	11.009.012.9009	喷油器体部件	Fuel Injection Valve Block	1	
2	11.009.012.9010	调整垫片	Washer	1	
3	11.009.012.9011	调压弹簧	Volt-Adjustment Spring	1	
4	11.009.012.9012	顶杆	Mandril	1	
5	11.009.012.9013	中间体	Intermediate Block	1	
6	11.009.012.9014	定位销	Locating Pin	2	
7	11.009.012.9001	喷油器偶件	Nozzle	1	

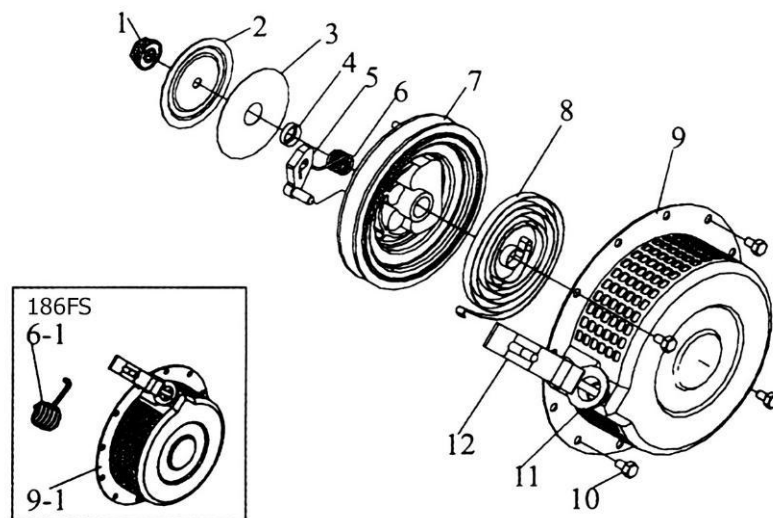
### 16、喷油泵部件（11.009.008.7302）



序号	物料代码	名称	Description	数量	备注
1	11.009.008.9004	出油阀紧座	Fuel Delivery Valve Forcing Holder	1	
2	11.009.008.9005	出油阀弹簧	Fuel Delivery Valve Spring	1	
3	11.009.008.9006	出油阀密封垫	Fuel Delivery Valve Sheet Gasket	1	
4	11.009.008.9007	出油阀芯	Fuel Delivery Valve Core	1	
5	11.009.008.9008	出油阀座	Fuel Delivery Valve Seat	1	
6	11.009.008.9009	油管体焊接件	Fuel Pipe Weldment Assy.	1	
7	11.009.008.9010	O型密封圈	O-Ring	1	
8	11.009.008.9011	泵体	Fip Block	1	
9	11.009.008.9002	柱塞	Plunger	1	

10	11.009.008.9012	垫片	Washer	按需	
11	11.009.008.9013	销 $\phi 2 \times 6$	Pin2x6	2	
12	11.009.008.9014	泵体连接盘	Fip Connecting Plate	1	
13	11.009.008.9016	油量控制套筒焊接件	Fuel Limiting Sheath Weldmenl Assy	1	
14	11.009.008.9017	钢丝挡圈	Steel Clip	1	
15	11.009.008.9018	销 $\phi 3 \times 8$	Pin3x8	1	
16	11.009.008.9019	支撑体	Support	1	
17	11.009.008.9020	柱塞弹簧	Spring	1	
18	11.009.008.9021	弹簧下座	Spring Holder	1	
19	11.009.008.9022	挺住体	Tappet	1	

### 17、手拉启动部件 (11.007.016.7305)



序号	物料代码	名称	Description	数量	备注
1	11.007.016.9006	自锁螺母 M8	Nut M8	1	
2	11.007.016.9007	摩擦盘	Friction Reel	1	
3	11.007.016.9008	摩擦片	Friction Plate	1	
4	11.007.016.9009	弹簧盖	Spring Cover	1	
5	11.007.016.9010	起动爪部件	Ratchet	1	
6	11.007.016.9011	回位弹簧	Return Spring	1	
7	11.007.016.9017	起动拉盘	Starter Reel	1	
8	11.007.016.9013	平面蜗卷弹簧	Spiral Spring	1	
9	11.007.016.9018	外壳部件	Outer Case Assy	1	
10	12.002.013.0121	螺栓 M6×8	Bolt M6 X8	4	
11	11.007.016.9015	起动拉绳	Starter Rope	1	
12	11.007.016.9016	起动手柄	Starter Handle	1	