

零部件图册使用说明（SUMMARY）

本零部件图册是根据2017年1月所能得到的最新资料编制而成的。

This manual is revised according to the latest information available due to July. 2017.

请注意2017年1月以后本零部件图册的修订通知。

New revision of manual after July. 2017 will be informed.

当订购零部件时，一定要明确指出其零部件编号。

Always Specifying the part number when ordering.

注意本零部件图册所给出的图形可能与实际零部件外形有所不同，请以实物为准。

Drawings in this manual may be different from the parts itself. Please refer to the practicality.

当需要对零部件图册的内容进行更改或增加时，本公司将在适当的时间出版修订版；为保证在任何时候都可以使用到最新版本的零部件明细，建议拥有最新的修订版本。如果要检查修订版本是否已经发行，请直接与“威马”联系。

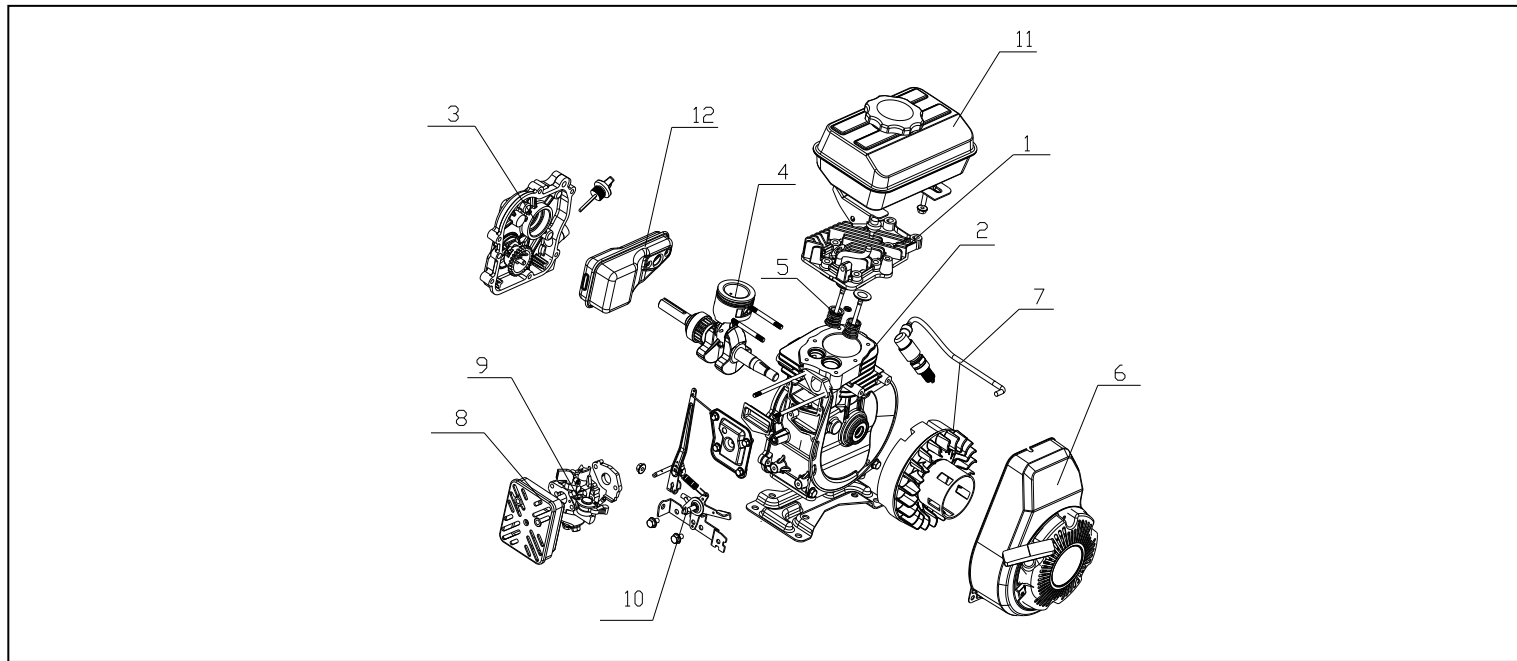
When contents in the manual need revised, our company will give out our new revision. Please keep the latest manual for servicing. Please connect with “WEIMA” for the latest version.

目录(Catalog)

01	封面 Cover
02	使用说明 Use instructions
03	目录 Catalog
04~05	发动机部件 Engine Assy
06	汽缸头组件 Head Assy
07~08	曲轴箱组件 Crankcase Assy
09~10	曲轴箱盖组件 Crankcase Cover Assy
11~12	曲轴、连杆、活塞组件 Crank Connecting Rod Assy
13	配气系统 Valve Train Assy
14	启动系统 Star Assy
15~16	进气系统 Inlet Assy
17	油门操作组合 Throttle Control Assy
18	飞轮点火器部件 Flywheel And Ignition Assy
19	排气系统 Exhaust Assy
20	燃油系统 Fule Oil Assy

编制: _____ 校对: _____ 审核: _____ 批准: _____

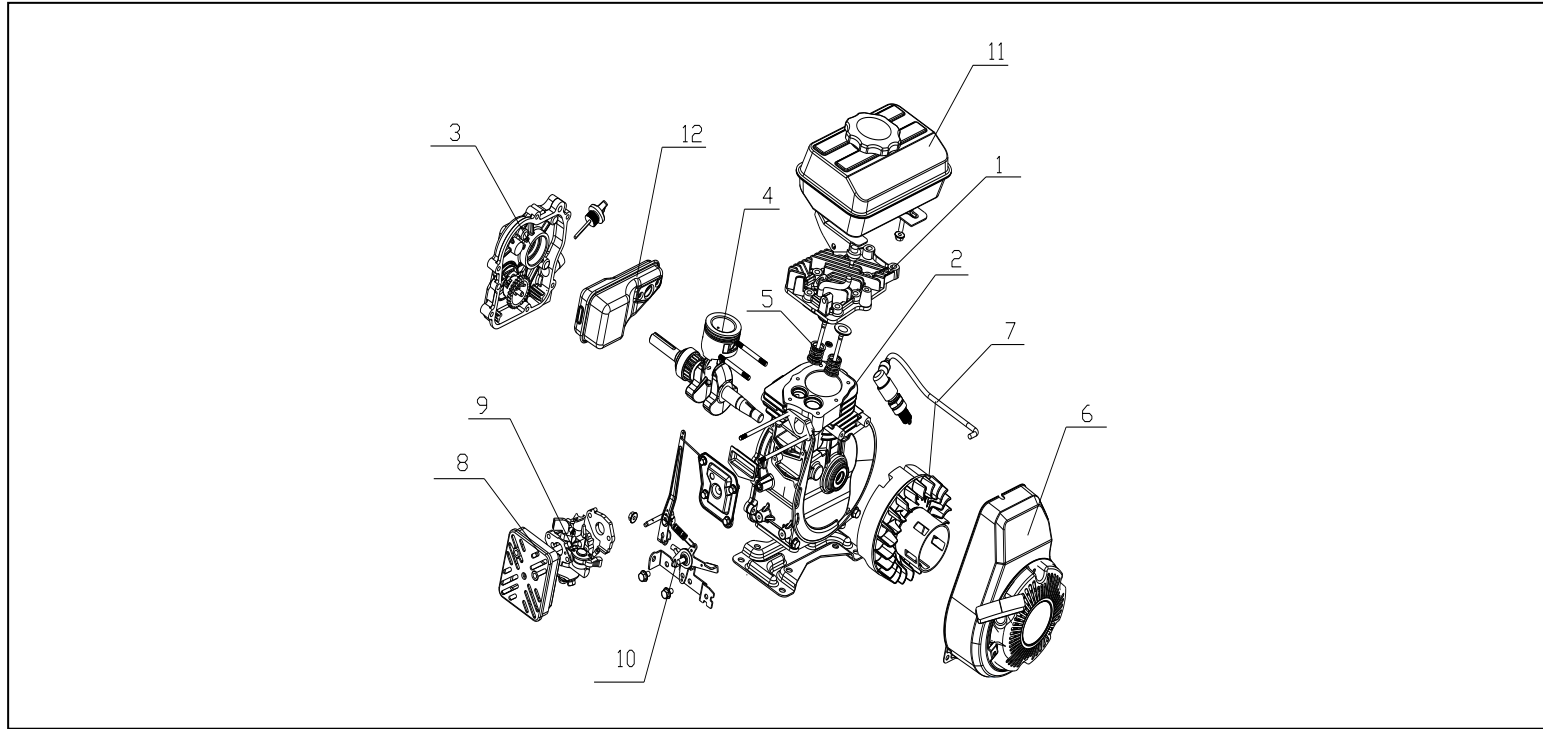
发动机部件 ENGINE ASSY



序号 NO.	零件代码 Part. NO.	中文名称 Chinese	英文名称 English	数量 (Qty) 152F/P
1	\	汽缸头组件	HEAD ASSY	1
2	\	曲轴箱组件	CRANKCASE ASSY	1
3	\	箱盖组件	CRANKCASE COVER ASSY	1
4	\	曲轴、连杆、活塞组件	CRANK-CONNECTING ROD ASSY	1
5	\	配气系统	VALVE TRAIN ASSY	1
6	\	启动系统	STAR ASSY	1
7	\	飞轮点火器部件	FLYWHEEL AND IGNITION ASSY	1
8	\	进气系统	INLET ASSY	1
9	\	化油器总成	CARBURETOR CIRCUIT ASSY	1
10	\	油门操作组合	THROTTLE CONTROL ASSY	1

编制: _____ 校对: _____ 审核: _____ 批准: _____

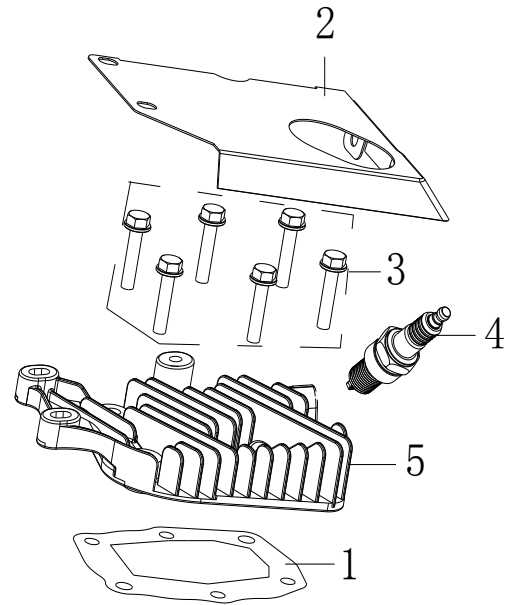
发动机部件 ENGINE ASSY



序号 NO.	零件代码 Part. NO.	中文名称 Chinese	英文名称 English	数量 (Qty) 152F/P
11	\	燃油系统	FULE OIL ASSY	1
12	\	排气系统	EXHAUST ASSY	1
				1

编制: _____ 校对: _____ 审核: _____ 批准: _____

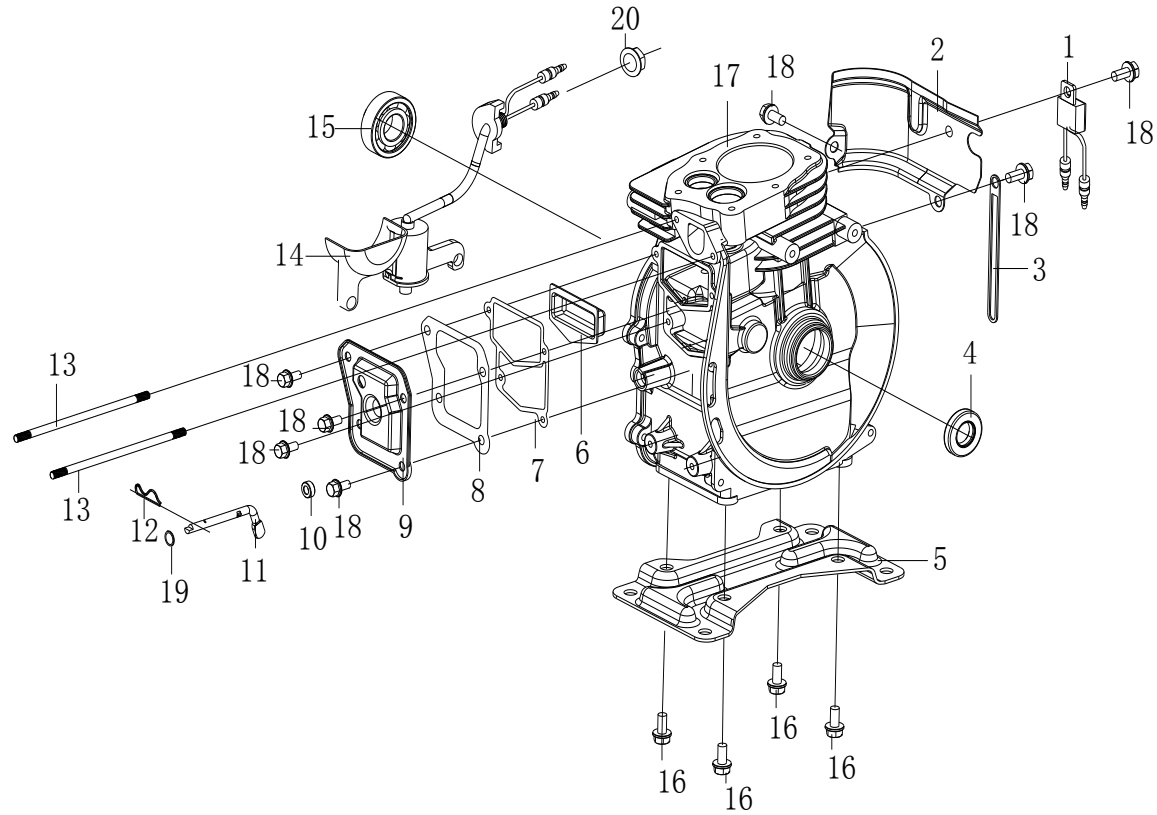
汽缸头组件 HEAD ASSY



序号 NO.	零件代码 Part. NO.	中文名称 Chinese	英文名称 English	数量 (Qty)
1	11.003.014.0002	汽缸头垫	GASKET, CYLINDER HEAD	1
2	11.010.001.0002	挡风罩	WINDSHIELD	1
3	12.002.013.0231	螺栓M6×35/GB/T5789	BOLT M6×12	6
4	11.008.009.0001	火花塞	PLUG, SPARK F7TC	1
5	11.003.015.0001	汽缸头盖	HEAD COVER	1

编制: _____ 校对: _____ 审核: _____ 批准: _____

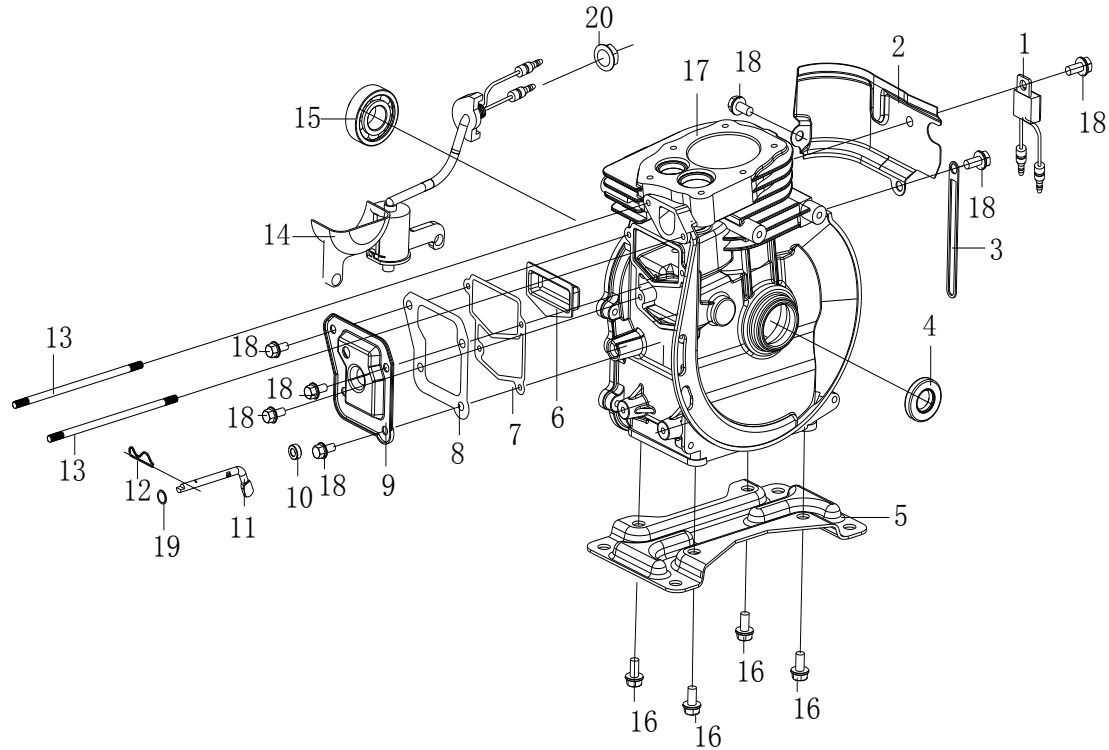
曲轴箱组件 CRANKCASE ASSY



序号 NO.	零件代码 Part. NO.	中文名称 Chinese	英文名称 English	数量 (Qty) 152F/P
1	11.008.003.0051	单向导通器	BREAKER, PROTECTIVE	1
2	11.010.008.0002	缸头挡风板	Cylinder head windshield	1
3	11.005.027.0002	直线夹	Straight line clip	1
4	12.016.002.0101	油封	Oil seal	1
5	11.005.032.0002	底板	Bottom plate	1
6	11.005.001.0002	挡油盖	Oil retaining cap	1
7	11.005.005.0002	废气室罩垫	WASTE GAS Chamber Cover Pad	1
8	11.005.033.0002	气门室隔热垫	Valve chamber insulation pad	1
9	11.005.004.0002	废气室盖板	WASTE GAS Chamber Cover	1
10	11.012.005.0002	调速摆杆油封	Adjustable swing rod oil seal	1

编制: _____ 校对: _____ 审核: _____ 批准: _____

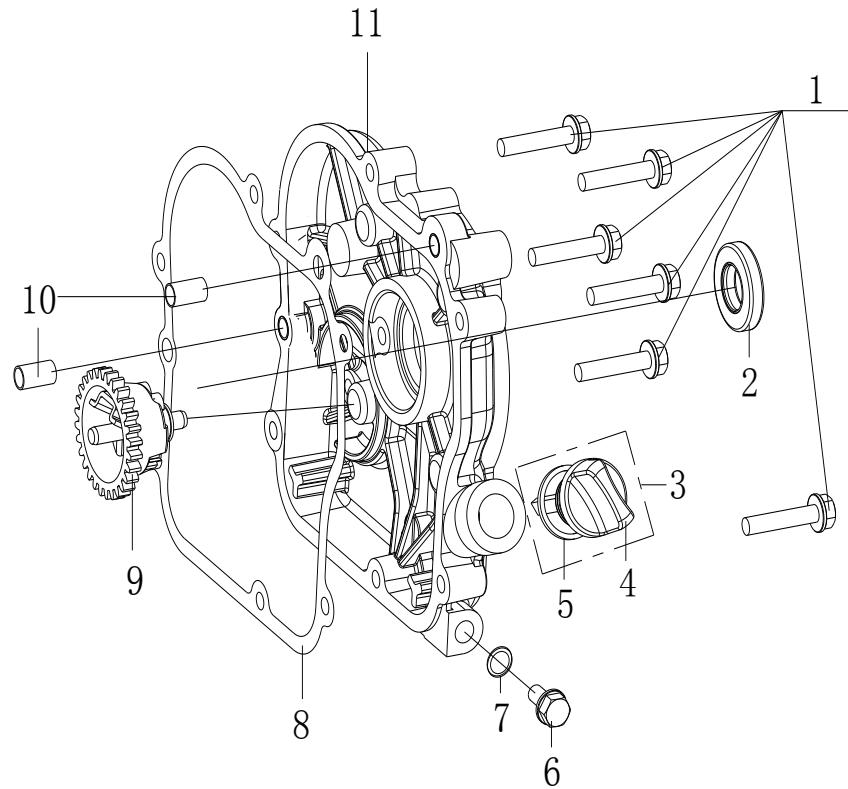
曲轴箱组件 CRANKCASE ASSY



序号 NO.	零件代码 Part. NO.	中文名称 Chinese	英文名称 English	数量 (Qty) 152F/P
11	11.012.002.0001	调速摆杆	GOVERNOR ARM SHAFT	1
12	11.012.004.0002	调速摆杆锁夹	LOCKER, GOVERNOR ARM SHAFT	1
13	12.015.025.0102	进气双头螺栓	Intake stud	2
14	11.005.010.0002	机油传感器	OIL SENSOR	1
15	12.009.001.0151	深沟球轴承	BEARING 6202/P6	1
16	12.002.012.0233	螺栓M8×16/GB/T16674	BOLT M6×16	4
17	11.005.022.0002	曲轴箱体	CRANKCASE COMP	1
18	12.002.012.0205	螺栓M6×12/GB/T16674	BOLT M6×12	7
19	12.006.014.0020	平垫圈	Flat washer	1
20	12.001.009.0053	螺母M10*1.25/GB/T/1687	NUT M10*1.25	1

编制: _____ 校对: _____ 审核: _____ 批准: _____

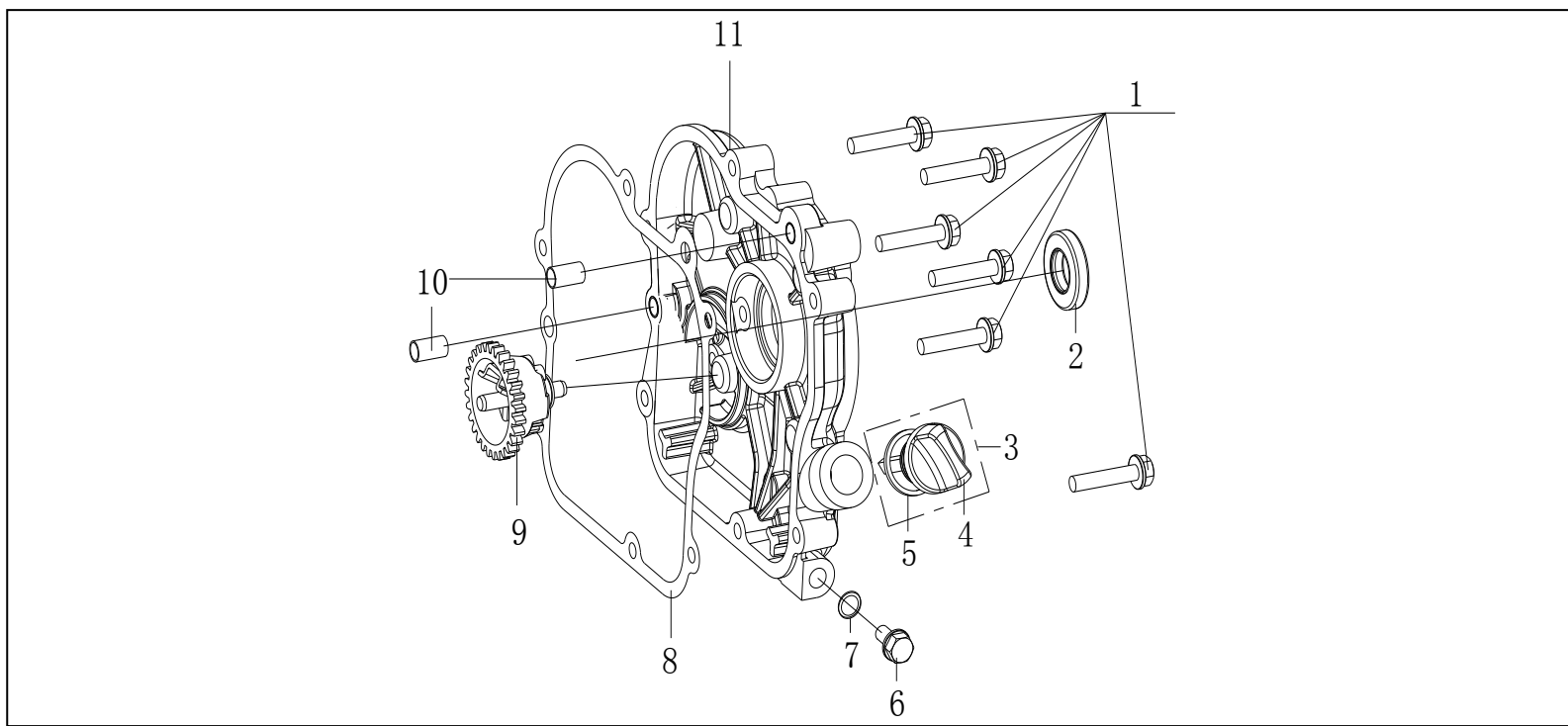
曲轴箱盖组件 CRANKCASE COVER ASSY



序号	零件代码	中文名称	英文名称	数量 (Qty)
NO.	Part. NO.	Chinese	English	152F/P
1	12.002.013.0211	螺栓M6×30/GB/T5789	BOLT M6×30	6
2	12.016.002.0101	油封	OIL SEAL $\phi 30 \times \phi 46 \times 8$	1
3	11.005.009.0055	机油尺组件	DIPSTICK ASSY	1
4	11.005.009.9008	机油尺	OIL FILLER PLUG	1
5	11.005.009.9007	机油尺密封圈	DIPSTICK SEALING RING	1
6	12.002.012.0063	放油螺栓	BOLT M12×1.5×15	1
7	12.006.014.0202	平垫圈	Flat washer	1
8	11.005.021.0002	曲轴箱密封垫	Crankcase gasket	1
9	11.012.009.0002	调速从动齿轮组合	Speed control driven gear COMP	1
10	12.015.002.0051	定位销8×14	Locating pin 8 x 14	2

编制: _____ 校对: _____ 审核: _____ 批准: _____

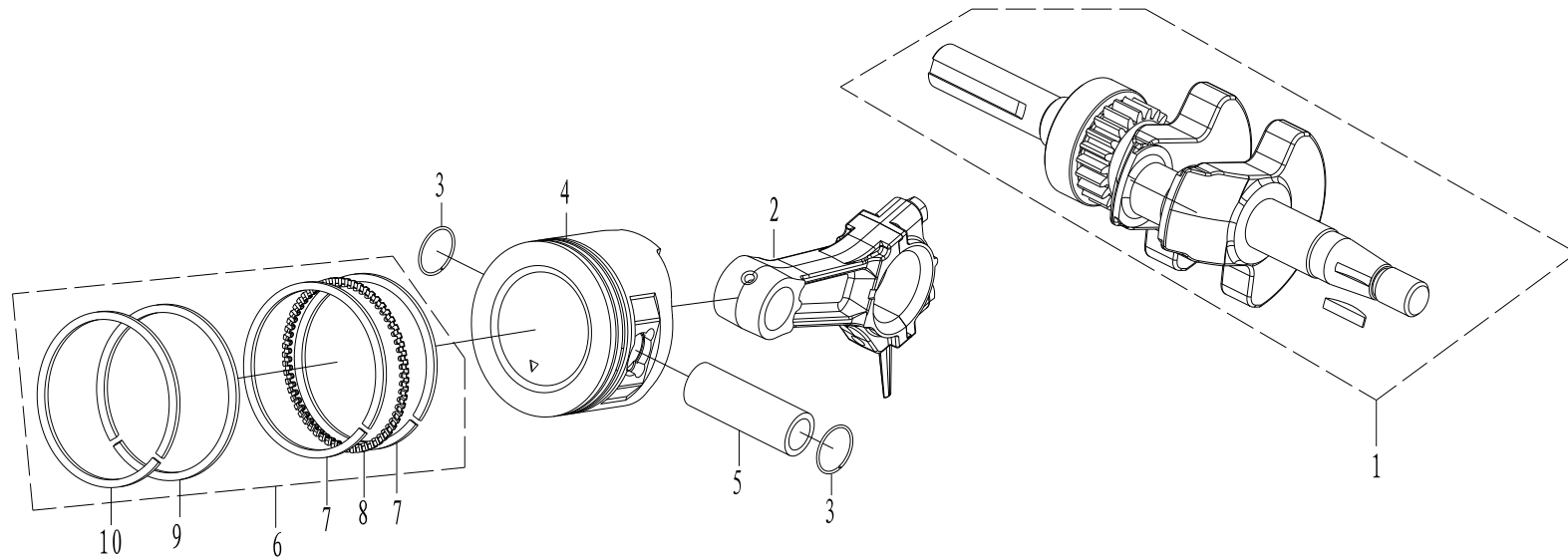
曲轴箱盖组件 CRANKCASE COVER ASSY



序号 NO.	零件代码 Part. NO.	中文名称 Chinese	英文名称 English	数量 (Qty) 152F/P
11	11.005.018.0001	曲轴箱盖	COVER, CRANKCASE	1

编制: _____ 校对: _____ 审核: _____ 批准: _____

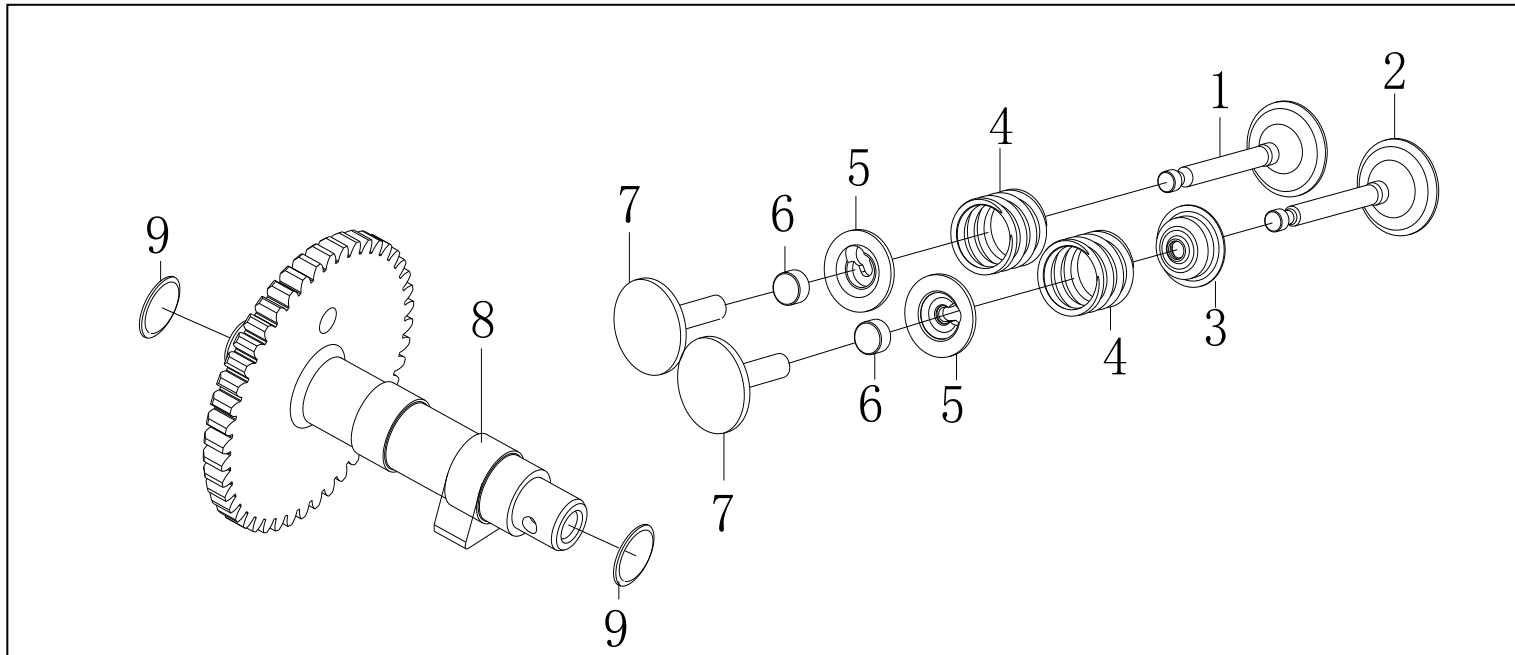
曲轴、连杆、活塞组件 CRANK-CONNECTING ROD ASSY



序号 NO.	零件代码 Part. NO.	中文名称 Chinese	英文名称 English	数量 (Qty) 152F/P
1	11.006.014.0003	曲轴部件	CRANK SHAFT ASSY	1
2	11.006.007.0001	连杆部件	CONNECTING ROD ASSY	1
3	11.006.006.0001	活塞销挡圈	CLIP, PISTON PIN	2
4	11.006.003.0001	活塞	PISTON	1
5	11.006.005.0001	活塞销	PIN, PISTON	1
6	11.006.004.0001	活塞环组合	PISTON RING ASSY	1
7	11.006.004.9052	片环	FILM LOOP	
8	11.006.004.9053	衬环	BUSH RING	
9	11.006.004.9051	气环二	GAS RING ONE	1
10	11.006.004.9050	气环一	GAS RING TWO	1

编制: _____ 校对: _____ 审核: _____ 批准: _____

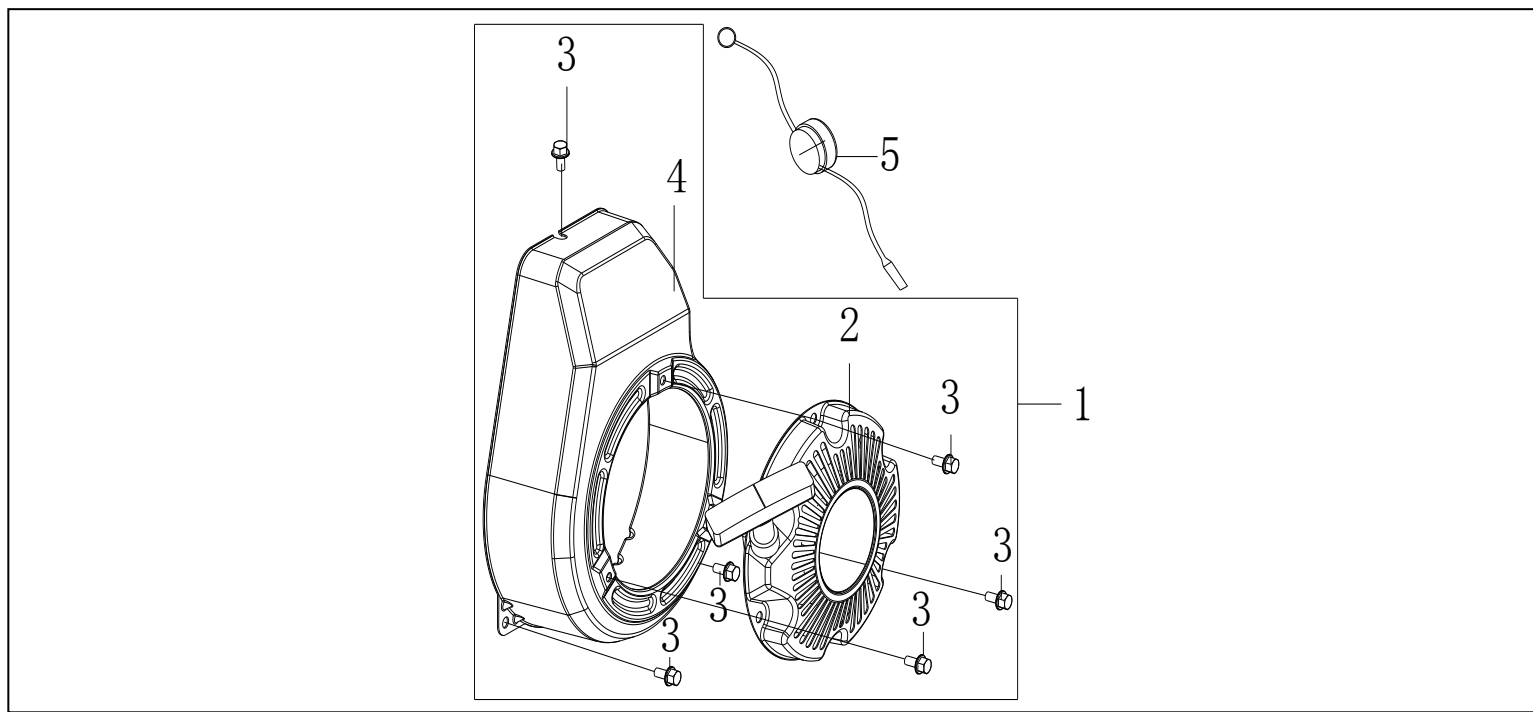
配气系统 VALVE TRAIN ASSY



序号 NO.	零件代码 Part. NO.	中文名称 Chinese	英文名称 English	数量 (Qty) 152F/P
1	11.004.004.0001	排气门	VALVE, EXHAUST	1
2	11.004.002.0001	进气门	VALVE, INLET	1
3	11.004.001.0002	挡油罩	VALVE SEAL	1
4	11.004.009.0001	气门弹簧	SPRING, VALVE	2
5	11.004.003.0001	进气门弹簧座	INTAKE VALVE SPRING SEAT	2
6	11.004.006.0001	排气门调节帽	ADJUSTER, EX. VALVE	2
7	11.004.015.0005	气门挺柱	LIFTER, VALVE	2
8	11.004.019.0002	凸轮轴总成	CAMSHAFT ASSY	1
9	12.006.014.0311	平垫圈 $\phi 12 \times \phi 18 \times 1$	Flat washer $\phi 12 \times \phi 18 \times 1$	2

编制: _____ 校对: _____ 审核: _____ 批准: _____

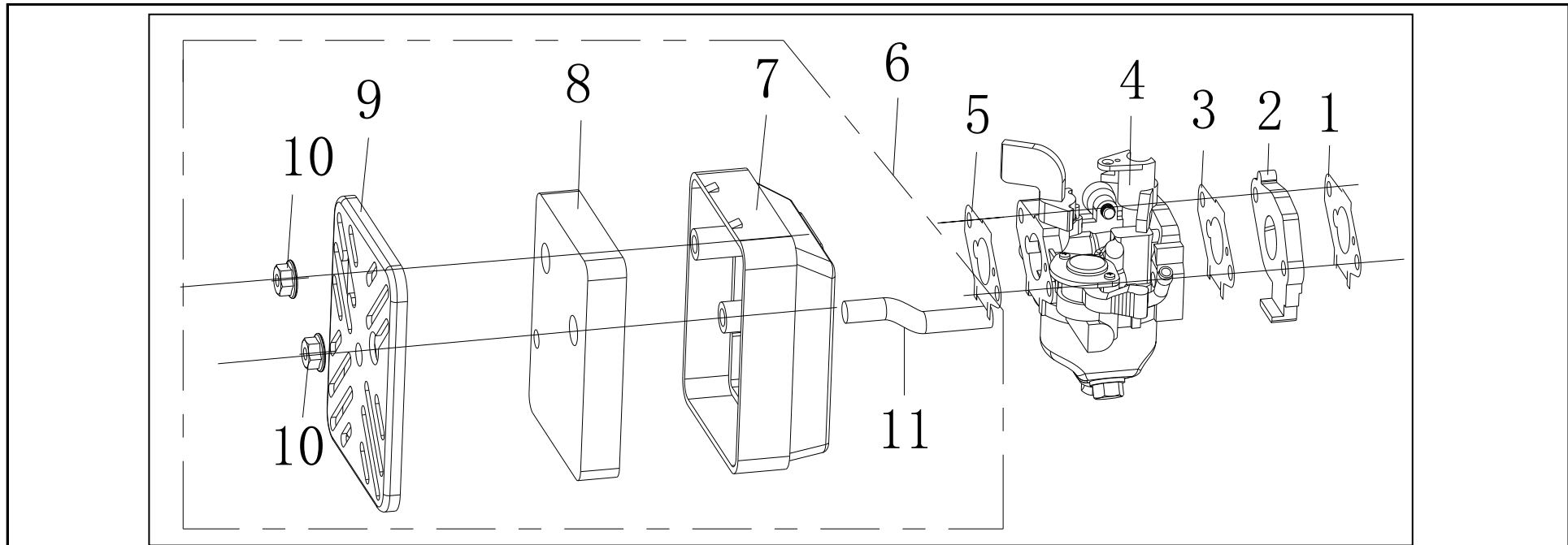
启动系统 STAR ASSY



序号 NO.	零件代码 Part. NO.	中文名称 Chinese	英文名称 English	数量 (Qty) 152F/P
1	11.007.009.0028	启动器总成	RECOIL STARTER ASSY	1
2	11.007.008.0104	起动拉盘组合	STARTER COMP, RECOIL	1
3	12.002.012.0205	螺栓GB/T16674/M6*12	BOLT GB/T16674.1/M6*12	6
4	11.007.009.9107	导风罩	WIND SCOOPER	1
5	11.008.011.0002	熄火开关组件	SWITH ASSY, ENGINE STOP	1
6				
7				
8				
9				
10				

编制：_____ 校对：_____ 审核：_____ 批准：_____

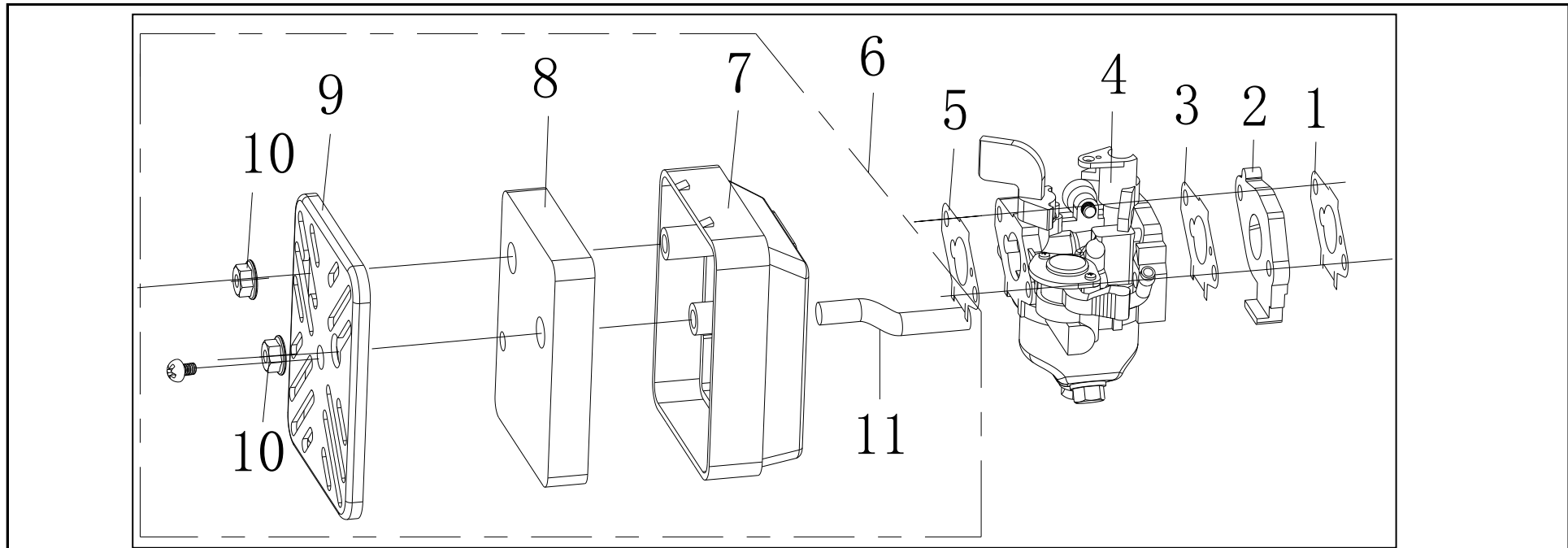
进气系统 INLET ASSY



序号 NO.	零件代码 Part. NO.	中文名称 Chinese	英文名称 English	数量 (Qty) 152F/P
1	11.001.009.0011	进气口垫	AIR INTAKE WASHER	1
2	11.001.004.0001	隔热板	INSULATOR	1
3	11.001.005.0011	化油器垫	PACKING, CARBURETOR	1
4	11.009.006.0004	化油器总成	CARBURETOR	1
5	11.001.012.0011	空滤器垫	GASKET, AIR CLEANER	1
6	11.001.016.0004	空气滤清器部件	AIR CLEANER ASSY	1
7	11.001.016.9019	空滤器外壳	AIR CLEANER CASE	1
8	11.001.016.9015	滤芯	Filter Element	1
9	11.001.016.9130	空滤器盖板	COVER, AIR CLEANER	1
10	12.001.005.0011	螺母M5/GB/T6177	NUT M5	2

编制: _____ 校对: _____ 审核: _____ 批准: _____

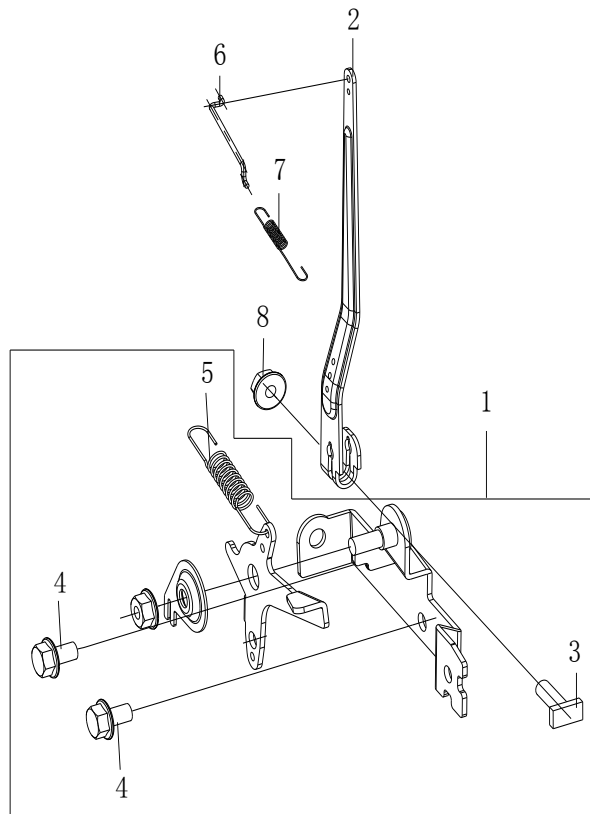
空滤器总成（油浴式） AIR FILTER ASSY



序号 NO.	零件代码 Part. NO.	中文名称 Chinese	英文名称 English	数量 (Qty)
11	11.001.002.0004	废气管	WASTE GAS PIPE	1
12	12.003.013.0002	十字槽头螺钉ST3.5*6		1

编制：_____ 校对：_____ 审核：_____ 批准：_____

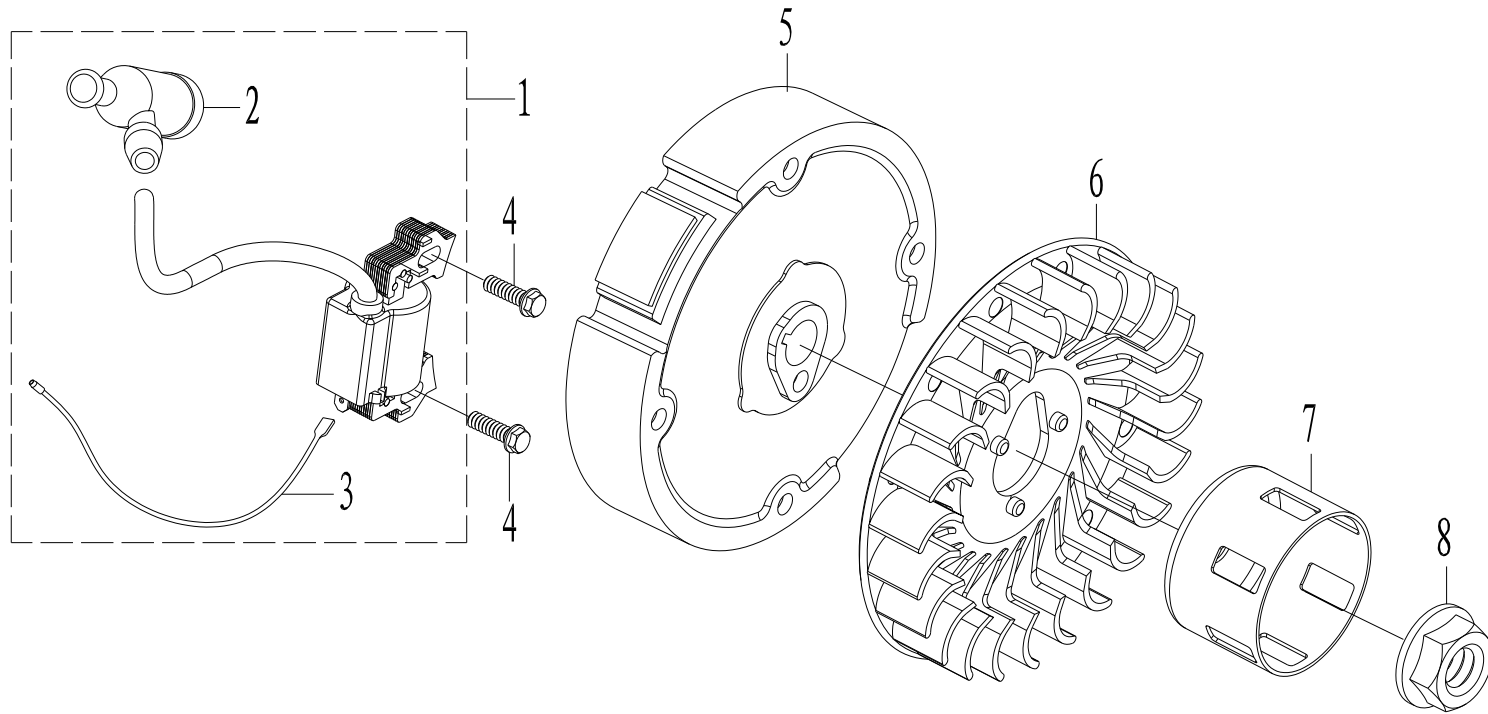
油门操作组合 THROTTLE CONTROL ASSY



序号 NO.	零件代码 Part. NO.	中文名称 Chinese	英文名称 English	数量 (Qty) 152F/P
1	11.012.023.0002	油门操纵组合	CONTROL ASSY	1
2	11.012.013.0002	调速臂	ARM, GOVERNOR	1
3	12.002.005.0031	T型螺栓	T-SHAPE BOLT	1
4	12.002.012.0205	螺栓M6×12/GB/T16674	BOLT M6×12	2
5	11.012.010.0002	调速弹簧	GOVERNING SPRING	1
6	11.012.018.0002	拉杆	TIE ROD	1
7	11.012.020.0002	微调弹簧	FINE ADJUSTMENT SPRING	1
8	12.001.005.0026	螺母M6/GB/T6117	NUT M6	1
9				
10				

编制: _____ 校对: _____ 审核: _____ 批准: _____

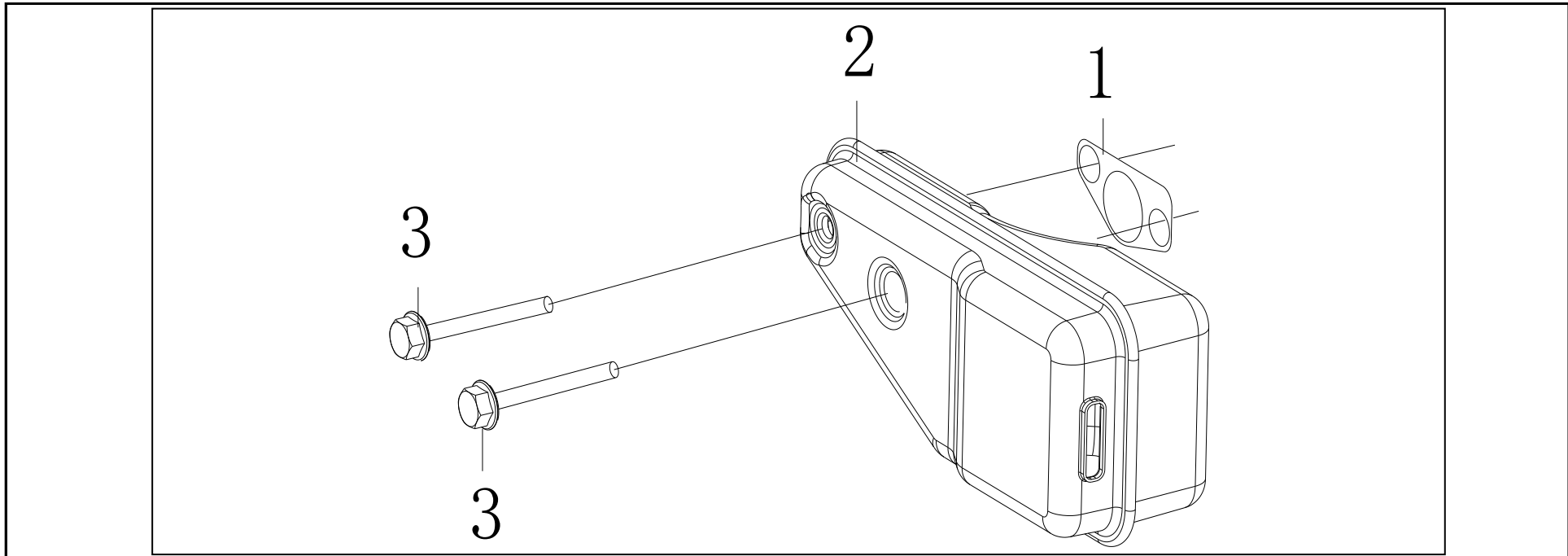
飞轮点火器部件 FLYWHEEL AND IGNITION ASSY



序号 NO.	零件代码 Part. NO.	中文名称 Chinese	英文名称 English	数量 (Qty) 152F/P
1	11.008.004.0002	点火器部件	IGNITION	1
2	11.008.004.9015	火花帽	CAP, IGNITION	1
3	11.008.004.9016	熄火线	CORD, STOP SWITCH	1
4	12.002.012.0211	螺栓M6×22/GB/T16674	BOLT M6×22	2
5	11.008.007.0001	飞轮部件	FLYWEEL	1
6	11.010.012.0002	叶轮	FAN, COOLING	1
7	11.007.006.0002	启动杯	PULLEY, STARTER	1
8	12.001.005.0071	GB/T 6177 螺母M12×1.25	NUT M12×1.25	1

编制: _____ 校对: _____ 审核: _____ 批准: _____

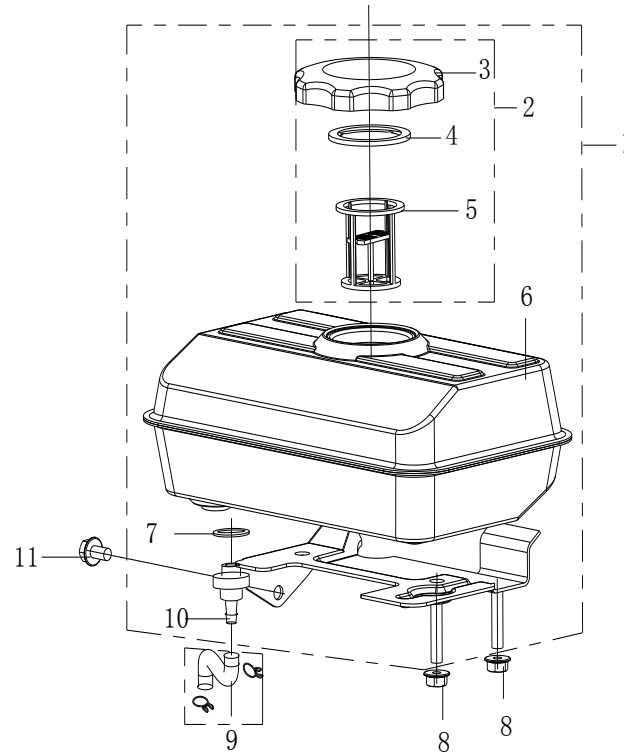
排气系统 EXHAUST ASSY



序号 NO.	零件代码 Part. NO.	中文名称 Chinese	英文名称 English	数量 (Qty) 152F/P
1	11.002.004.0002	排气口垫	AIR EXHAUST WASHER	1
2	11.002.011.0055	消声器总成	MUFFLER COMP	1
3	12.002.013.0274	螺栓M6*45/GB/T5789	Bolt M6*45	2
4				
5				
6				
7				
8				
9				
10				

编制: _____ 校对: _____ 审核: _____ 批准: _____

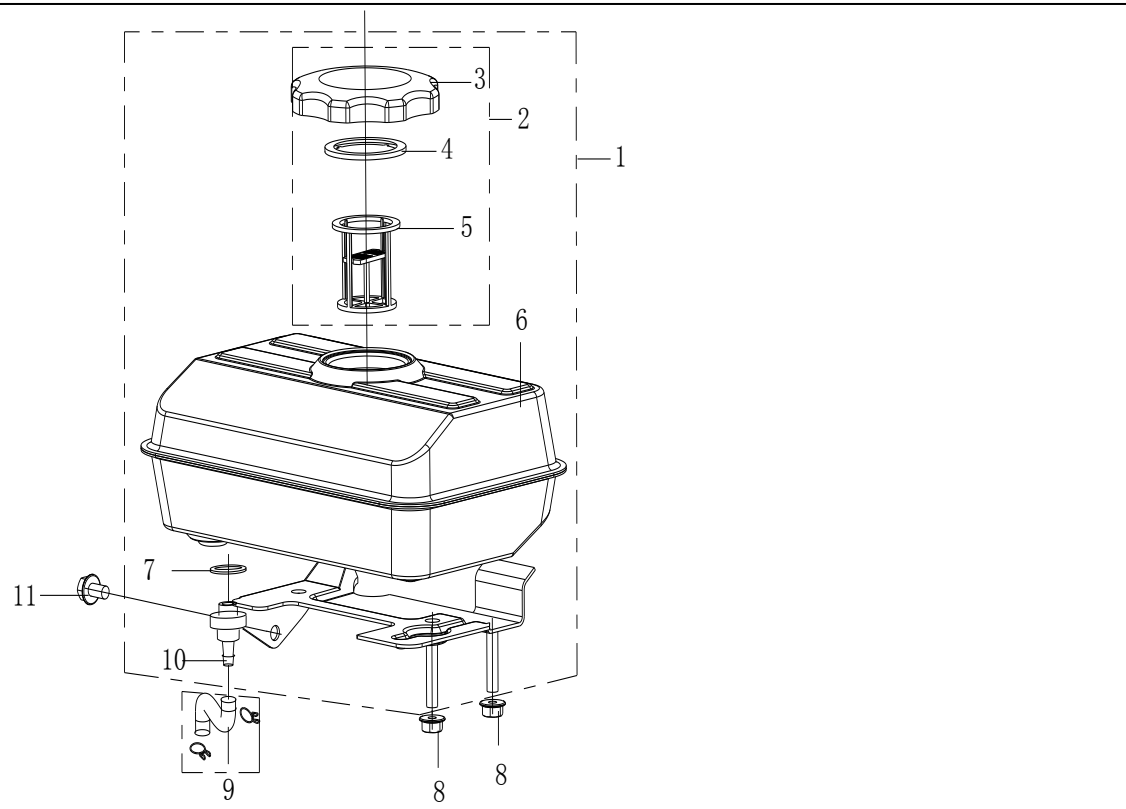
燃油系统 FULE OIL ASSY



序号 NO.	零件代码 Part. NO.	中文名称 Chinese	英文名称 English	数量 (Qty) 152F/P
1	11.009.034.0611	油箱组件	TANK FUEL COMP	1
2	11.009.034.9065	油箱盖组件	CAP COMP, FUEL FILLER	1
3	11.009.034.9066	油箱盖	Fuel Tank Cap	1
4	11.009.034.9049	油箱盖密封圈	PACKING, FUEL FILLER	1
5	11.009.034.9045	油箱滤网	FILTER FUEL	1
6	11.009.034.9067	油箱本体	FUEL TANK	1
7	11.009.034.9052	油嘴密封圈	PACKING	1
8	12.001.005.0026	螺母M6/GB/T6117	NUT M6	2
9	11.009.005.0002	化油器油管组件	CARBURETOR TUBE, FUEL	1
10	11.009.034.9053	出油嘴	JOINT, FUEL TANK	1

编制: _____ 校对: _____ 审核: _____ 批准: _____

燃油系统 FULE OIL ASSY



序号 NO.	零件代码 Part. NO.	中文名称 Chinese	英文名称 English	数量 (Qty)
11	12.002.012.0205	螺栓M6*12/GB/T16674	Bolt M6*12	1

编制: _____ 校对: _____ 审核: _____ 批准: _____